

## 16 Adele Avenue Wadalba NSW

4  2  2 

Discover effortless family living in this beautifully presented 4-bedroom, 2-bathroom home, perfectly positioned in one of Wadalba's most convenient neighbourhoods. Set on a 474m<sup>2</sup> block, this modern single-level residence offers comfort, space and low-maintenance living - ideal for families, downsizers, or investors.

Stepping inside, you're greeted by a practical layout designed for everyday ease, featuring multiple living zones and generously sized bedrooms. The master suite includes its own ensuite, while the remaining bedrooms are serviced by a modern family bathroom. With double car accommodation, there's ample room for vehicles, storage, or weekend toys.

**Type** : House  
**Land Size** : 474 sqm  
**View** : <https://www.spgpropertyagents.com.au/8637689>

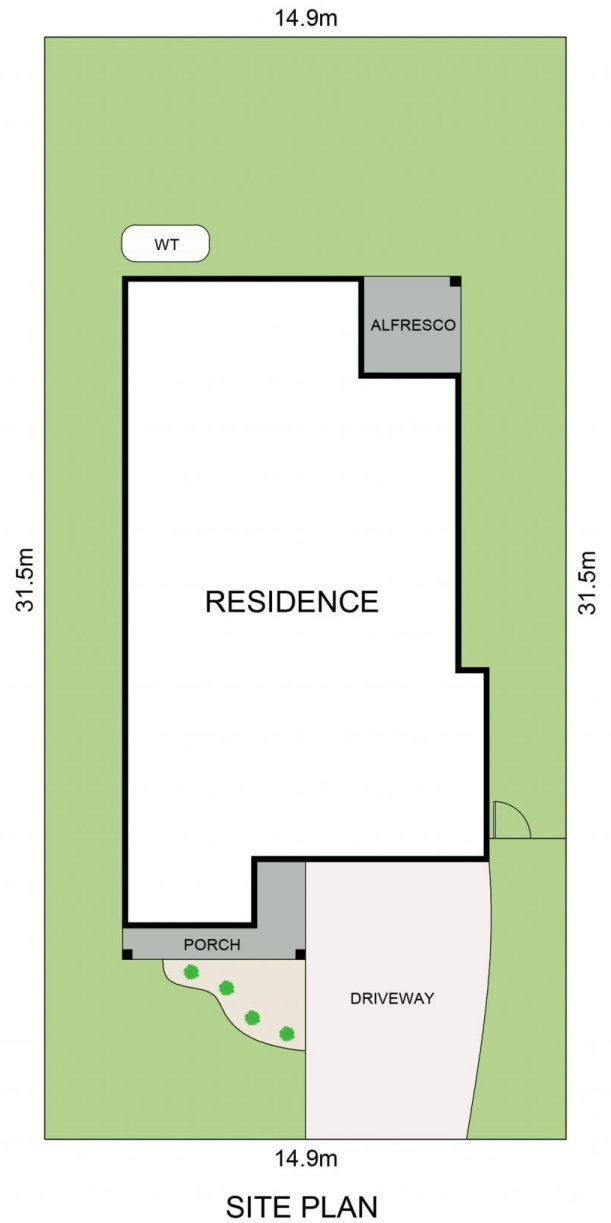
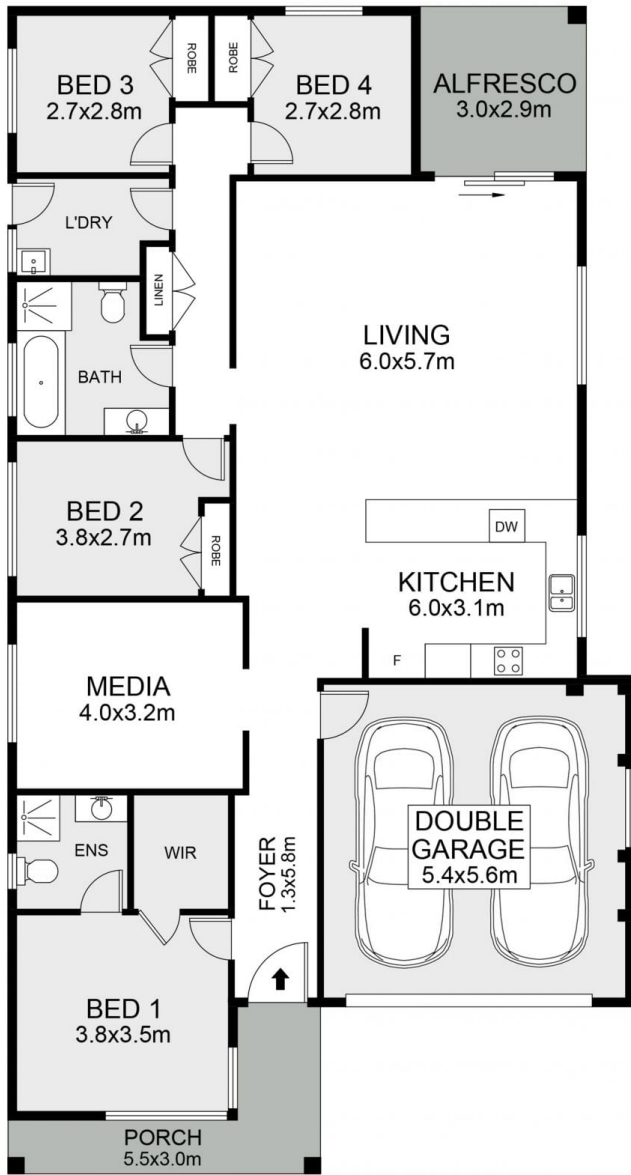


**Paul Geronimi**  
0438 880 184



**Taylor Willner**  
0431 627 385

[For full version visit the website](https://www.spgpropertyagents.com.au)



## 16 Adele Avenue, Wadalba

Scale in metres. Indicative only. Measurements and dimensions are approximate.  
 All information contained herein is gathered from sources we believe to be reliable.  
 However we cannot guarantee its accuracy and interested persons should rely on their own enquiries.

**SPG.**  
 Property Agents

INT : 178m<sup>2</sup>  
 EXT : 28m<sup>2</sup>

